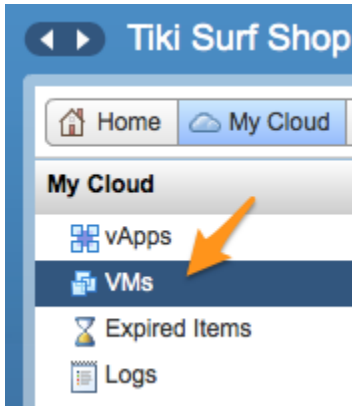


# Mount ISO from a Catalog

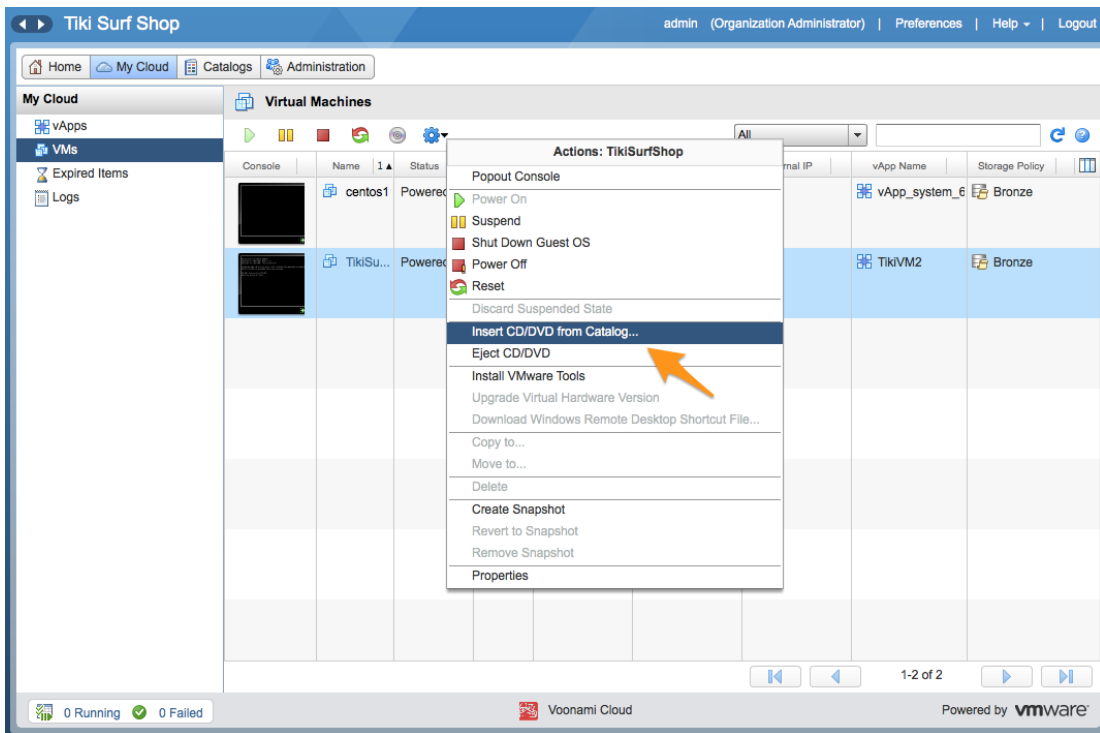
If you have just installed a VM from scratch, (not a pre-built template), then the next step will be mounting an OS installation iso in order to install the Operating System.

**\*\*Note** you will want to make sure your VM is **NOT** powered on during the beginning of this process. We will be powering it up later.\*\*

1. Login to your [Cloud Portal](#).
2. Select My Cloud then locate the options on the left hand column and select 'VMs.'



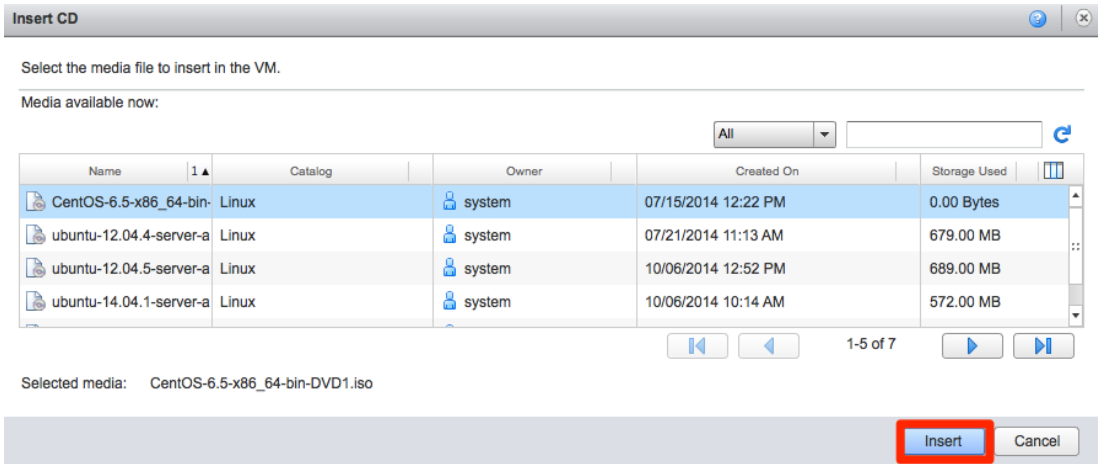
3. Right-click the VM and choose 'Insert CD/DVD from Catalog...'



4. A popup window will open up from

where you can select an OS to insert to your virtual CD/DVD drive.

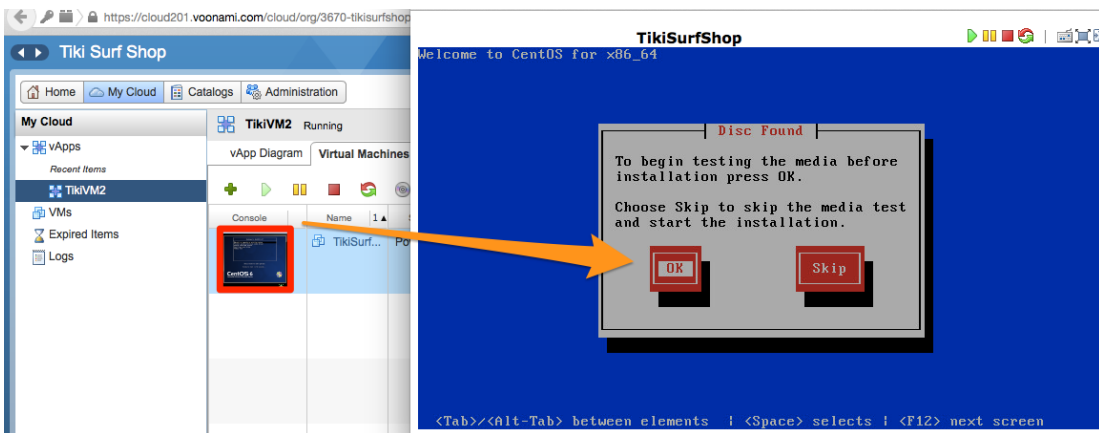
Select the OS that you wish in install and press the 'Insert' button to upload the OS to your virtual machine.



5. Once the OS has been loaded up to your disk, you will need to power

up your VM to begin the installation process.

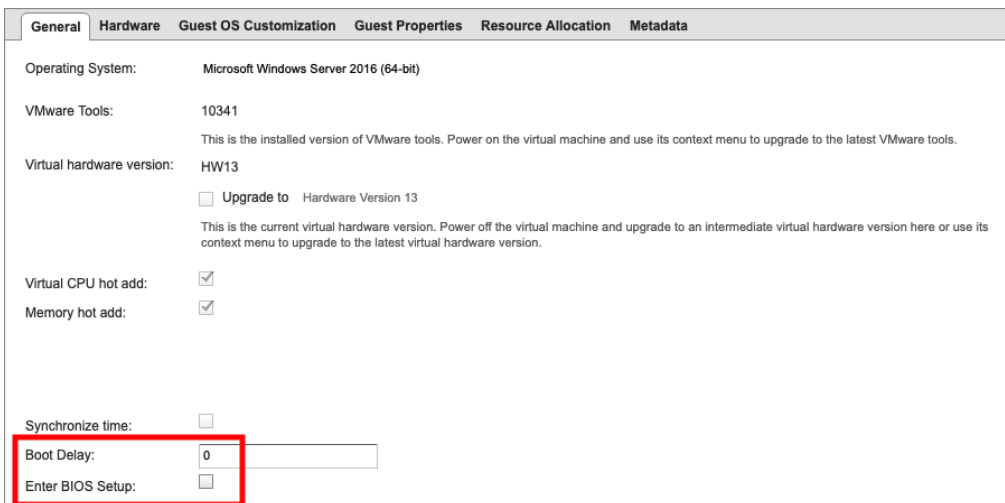
6. Select the console window to monitor the boot-up of the OS the loading of the ISO you connected.



7. If the ISO is not

loaded when the VM is powered on, you may need to adjust the BIOS Boot Delay

1. Right-click the VM and choose Properties
2. On the General Tab
3. Enter a value (seconds) for the Boot Delay option



8. If the ISO is not loaded when the VM is powered on, you may need to adjust the BIOS Boot Order

1. Right-click the VM and choose Properties
2. On the General Tab
3. Select the Enter BIOS Setup option
4. Power on the VM which should now load the BIOS setup screen

5. Adjust the Boot Order as required
6. Reboot

## Related articles

- [Mount ISO from a Catalog](#)
- [Convert a Physical Server to a Virtual Machine](#)
- [Client Integration Plugin](#)
- [Upload OVF - OVA VM file](#)
- [Upload ISO Media to my Catalog](#)